

## preLink RJ45 plug, IP20 Cat.6A L-35°

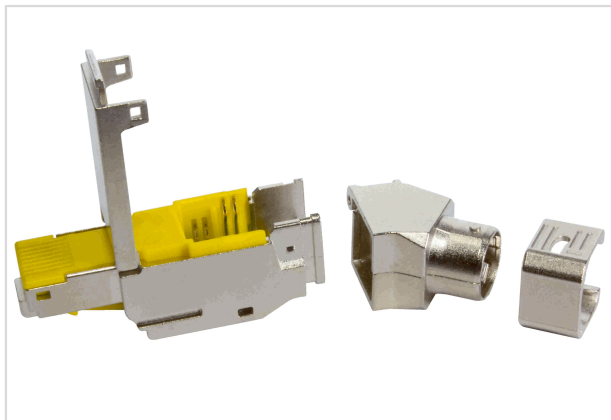


Image is for illustration purposes only. Please refer to product description.

Part number	20 82 101 0022
Specification	preLink RJ45 plug, IP20 Cat.6A L-35°
HARTING eCatalogue	<a href="https://b2b.harting.com/20821010022">https://b2b.harting.com/20821010022</a>

### Identification

Category	Connectors
Series	preLink®
Element	Connector
Specification	RJ45 35° angled

### Version

Termination method	preLink® IDC insulation displacement termination
Gender	Male
Shielding	Shielded
Number of contacts	8
Coding	RJ45

### Technical characteristics

Transmission characteristics	Cat. 6 <sub>A</sub> Class E <sub>A</sub> up to 500 MHz
Data rate	10 Mbit/s 100 Mbit/s 1 Gbit/s 2.5 Gbit/s 5 Gbit/s 10 Gbit/s
Limiting temperature	-40 ... +85 °C
Relative humidity	95 % Non-condensing (operation)
Mating cycles	≥750
Degree of protection acc. to IEC 60529	IP20



**Pushing Performance**  
Since 1945

## Technical characteristics

Cable diameter	5 ... 9 mm
----------------	------------

## Material properties

Material (insert)	Zinc die-cast, nickel-plated
-------------------	------------------------------

## Specifications and approvals

Approvals	DNV GL
PROFINET	Yes

## Commercial data

Packaging size	1
Net weight	26.46 g
Country of origin	Latvia
European customs tariff number	85366990
GTIN	5713140224223
eCl@ss	27440114 Rectangular connector (for field assembly)